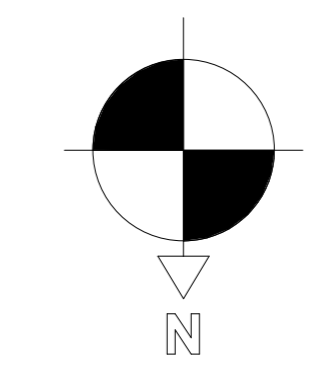
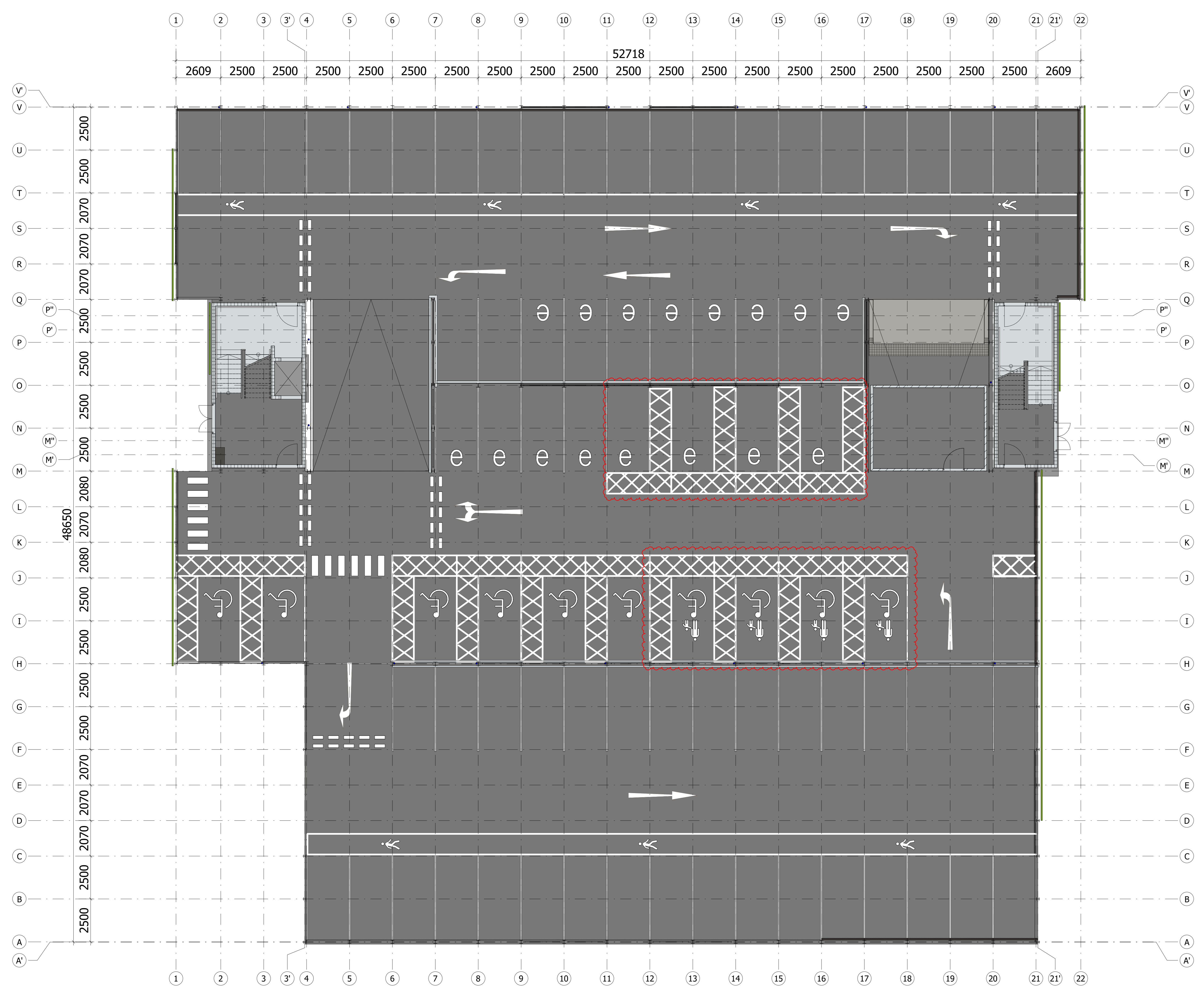
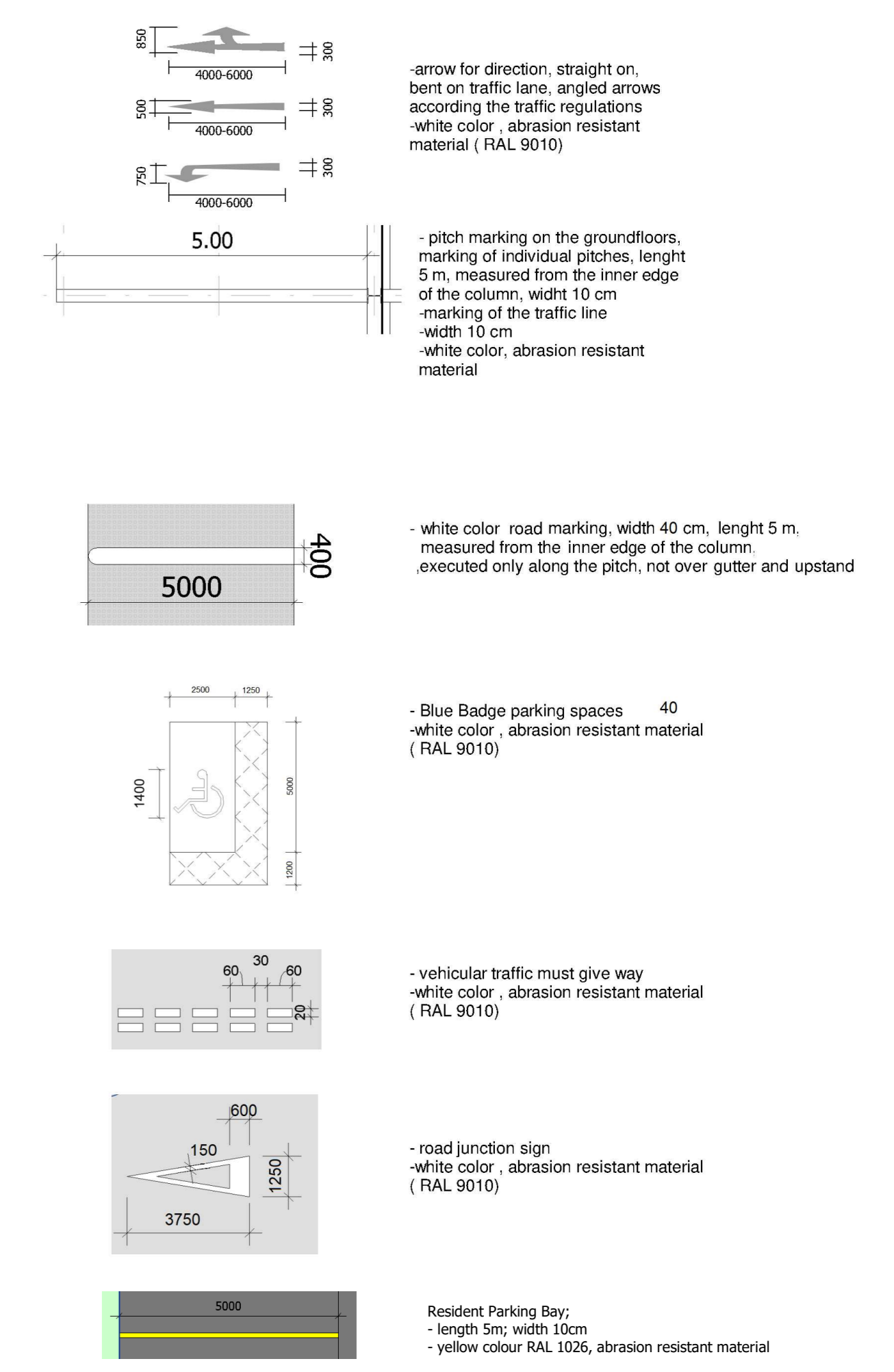


Markings for use with GIVE WAY sign

Figure 3-2

Floor marking Legend / Signs



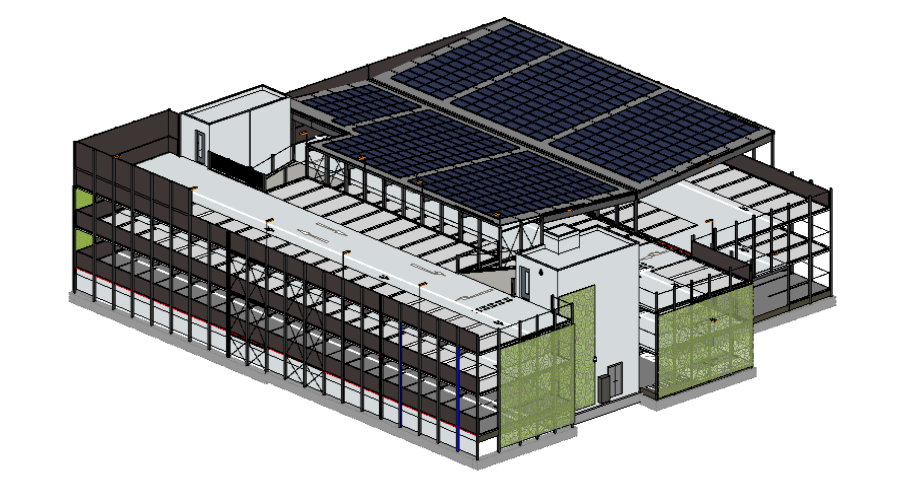
CLIENT:
Winchester City Council signature:

The Guildhall, City Offices, Colebrook St
 Winchester, SO23 9LJ

SUBCONTRACTOR:
Goldbeck Construction LTD signature:

Eagle 2, Hatchford Way, Coventry Road
 Birmingham, B26 3RZ

BUILDING SITE:
 building site: Barfield Ct, Winchester SO23 9SQ, United Kingdom



EXECUTION DESIGN

index	date	name/checked	revision
001	31/05/2021	JJ/M.OB.	Development of detailed plan & E1 parking bays
002	17/06/2021	JJ/M.OB.	Revised plan

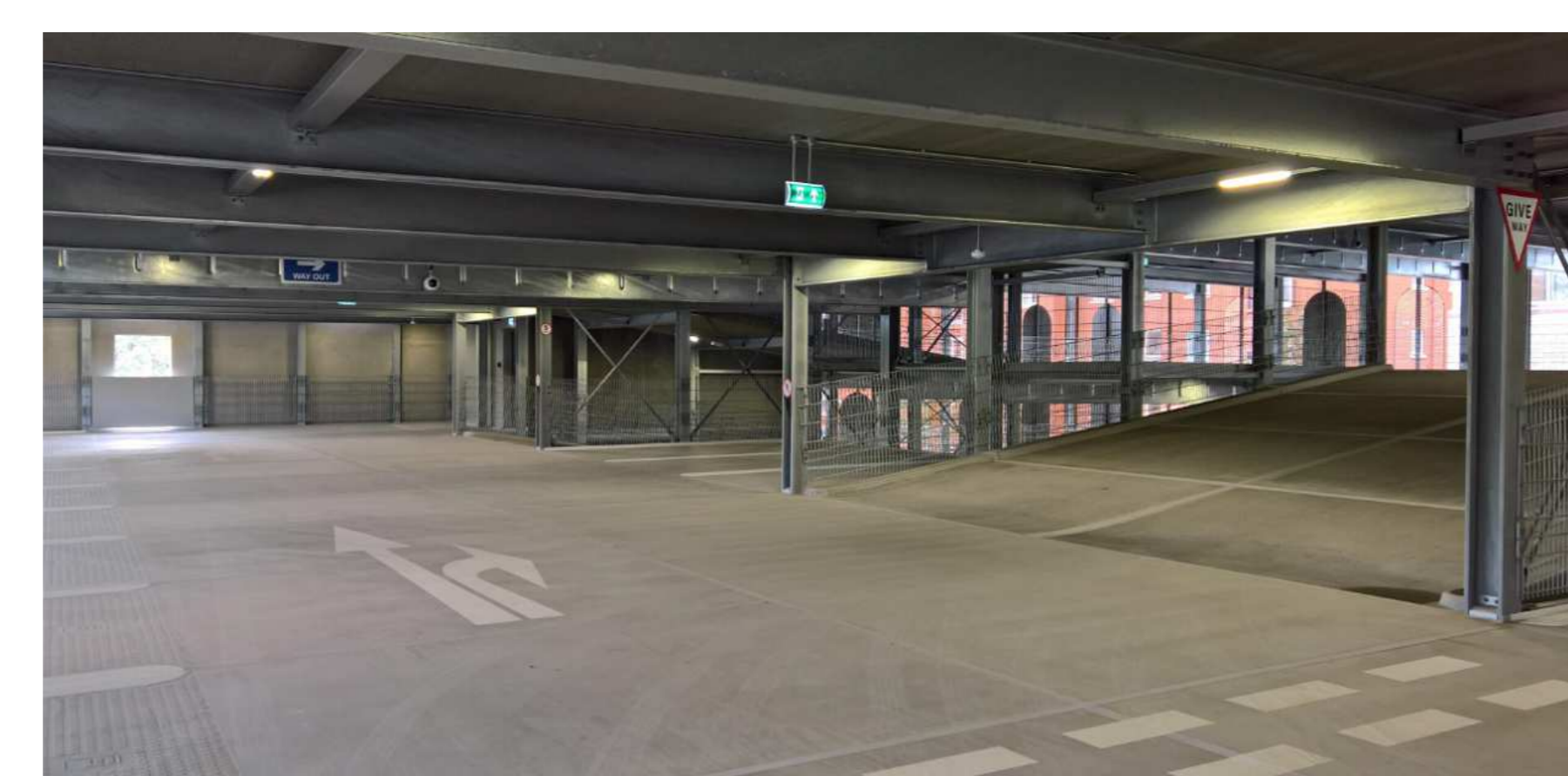
GOLDBECK
 Eagle 2, Hatchford Way, Coventry Road, Birmingham, B26 3RZ

project no. **BH0198**
Vauxhall Multi-Storey Car Park, Winchester

contents	phase	planner	type
White lining level 0 and 0.5	5	OP	GA
	level	drawing no.	index
	00-01	01400	P03

MATERIALS

	Parking Bay - Waffle anti-slip structure - R11		Tarmac
	Traffic Lane: Smooth Anti-slip Surface - R12		Blockwork
	Ramps (Typical Level): Smooth Anti-slip Surface - R12		Block paving
	Precast Concrete Elements		Changes



This document is the property of GOLDBECK Construction Ltd and its contractors. No part of this document may be reproduced or transmitted in any form or by any means, electronic, mechanical, photocopying, recording, or by any information storage and retrieval system, without the prior written permission of GOLDBECK Construction Ltd.