

Parking Types Schedule	
Count	Type
11	Disabled Parking, 2.5m x 3.75 (Tarmac)
4	Disabled-Parent-EV
12	Electric Parking Bay, 2.5 x 5.0m (Tarmac)
54	Standard Bay (Tarmac)
3	Standard Parking Bay, 2.4m x 4.8m External
20	Standard Parking Bay, 2.4m x 5.0m External
174	Standard Parking Bay, 2.5m x 5.0m (Waffle)
9	Standard Parking Bay, 2.5m x 5.0m External
Grand total: 287	

Parking Types Schedule - External vs MSCP		
Count	Comments	Mark
21	External Parking	
12	External Parking	Resident
External Parking: 33		
240	Parking within MSCP	
14	Parking within MSCP	Future EV
Parking within MSCP: 254		
Grand total: 287		

Parking Schedule					
Count	Level	Type	Comments	Comments	Mark
1	Level 00-01	Disabled Parking Bay	External Parking	Resident	
10	Level 00-01	Disabled Parking Bay	Parking within MSCP		
4	Level 00-01	Disabled-Parent-EV	Parking within MSCP		
12	Level 00-01	Electric Charging Point	Parking within MSCP		
40	Level 00-01	Standard Parking Bay	Parking within MSCP		
14	Level 00-01	Standard Parking Bay	Parking within MSCP	Future EV	
21	Level 00-01	Standard Parking spaces	External Parking		
11	Level 00-01	Standard Parking spaces	External Parking	Resident	
Level 00-01: 113					
87	Level 02-03	Standard Parking Bay	Parking within MSCP		
Level 02-03: 87					
87	Level 04-05	Standard Parking Bay	Parking within MSCP		
Level 04-05: 87					
TOTAL: 287					

- Key:**
- Existing Trees with Root Protection Area
 - Proposed Trees
 - Proposed porous asphalt (design by Goldbeck)
 - Proposed raised cellular paving with grass 2m wide maintenance path with PCC edging kerb as part of 'no-dig construction'. Refer to arboricultural report (design by client)
 - Proposed blister buff tactile paving
 - Site boundary
 - Changes
- Details**
- 16 Deck**
- A (16) 0013 Retaining wall detail - centre grid
 - A (16) 0019 Multi storey car park, bulkhead internal corner at ramp deep basement and filled up level
 - A (16) 0023 Multi storey car park, bulkhead longitudinal grid high point filled up level
 - A (16) 0034 Multi storey car park, bulkhead longitudinal grid high point filled up level
- 23 Deck**
- A (23) 0009 Multi storey car park, joints composite joint
 - A (23) 0010 Multi storey car park, joints compression joint
 - A (23) 0011 Multi storey car park, edge joint
 - A (23) 0012 Car park deck/ramp joint - low point
 - A (23) 0013 Multi storey car park, joints ramp low
 - A (23) 0014 Car park deck/ramp joint - high point
 - A (23) 0015 Car park ramp - composite joint
 - A (23) 0019 Multi storey car park, joints low point with coping stone
 - A (23) 0063 Car park joint between car park deck and the staircase door entry
 - A (23) 0065 Multi storey car park, joints expansion joint staircase - weathered level
 - A (23) 0071 Multi storey car park, joints, centre grid, high point
 - A (23) 0134 Multi storey car park, joints, filling stone joint, low point with groove profile in gutter
- 27 Structure (Steel/Concrete)**
- A (27) 0003 Split level section through - centre grid
 - A (27) 0004 Section through eaves - low point - standard level
 - A (27) 0005 Multi storey car park, parapet longitudinal grid high point standard upper level
 - A (27) 0006 Section through gable end - standard level
 - A (27) 0020 Parapet detail above the ramps
- 52 Drainage**
- A (52) 0002 Multi storey car park, drainage connection longitudinal grid down-pipe
 - A (52) 0003 Carpark rainwater pipe detail along longitudinal axis - standard level
 - A (52) 0005 Carpark rainwater pipe along longitudinal axis - top floor
 - A (52) 0006 Multi storey car park, drainage connection centre grid down pipe, ground level
 - A (52) 0007 Multi storey car park, drainage connection centre grid down pipe, standard upper level
 - A (52) 0008 Multi storey car park, drainage connection centre grid down pipe, top level

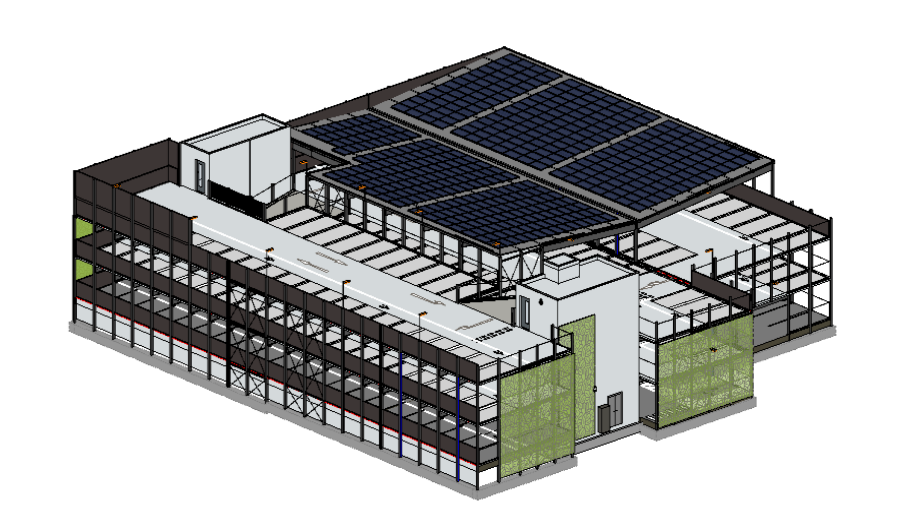
MATERIALS

Parking Bay - Waffle anti-slip structure - R11	Tarmac
Traffic Lane: Smooth Anti-slip Surface - R12	Blockwork
Ramps (Typical Level): Smooth Anti-slip Surface - R12	Block paving
Precast Concrete Elements	Changes

EMPLOYER:
Winchester City Council signature: _____
 The Guildhall, City Offices, Colebrook St
 Winchester, SO23 9LJ

SUBCONTRACTOR:
Goldbeck Construction LTD signature: _____
 Eagle 2, Hatchford Way, Coventry Road
 Birmingham, B26 3RZ

BUILDING SITE:
 building site: Barfield Ct, Winchester SO23 9SQ, United Kingdom



EXECUTION DESIGN

no.	date	name/checked	revision
1	31/03/2021	JJ/M.DB	Landscape design updated: Future EV Parking Bays added
2	08/03/2021	JJ	Final design
3	09/03/2021	M.OB.	

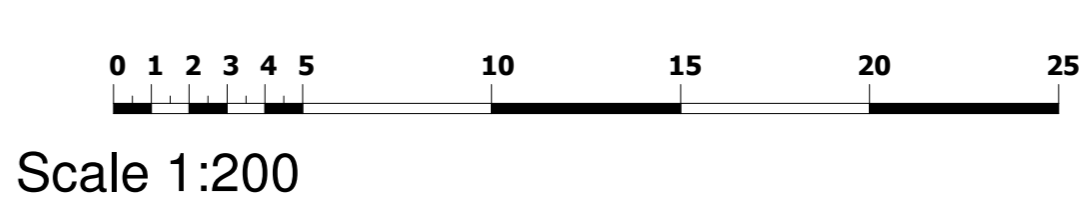
scale: As indicated @A0

project no. **BH0198**

contents

phase	planner	type
5	OP	GA
level	drawing no.	index
00-01	00101	P02

Drawing Number: VTX-GBC-ZX-DR-A-0002



This document is the property of GOLDBECK Construction Ltd and is intended for copyright. It may not be reproduced or made accessible in any form without express permission. © GOLDBECK Construction Ltd. All rights reserved.