

King George V Park Plan



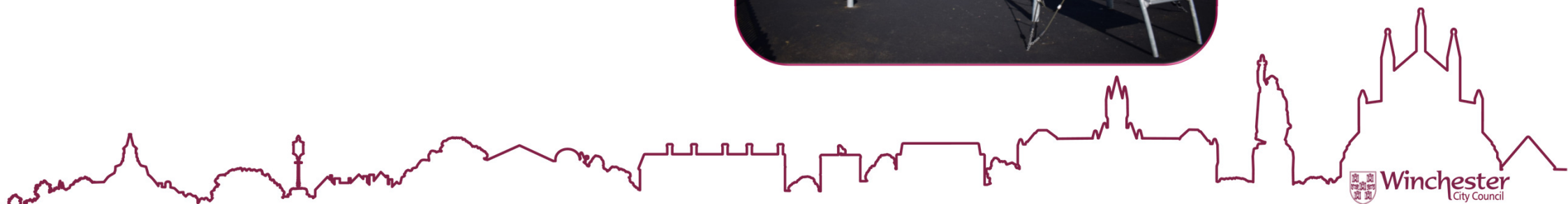
Overview

1. Community engagement
2. Improvements to date
3. Play area refurbishment
4. Skate park
5. Sports pitches
6. Pavilion
7. Environmental improvements



The Park Plan

- Areas of the park are due for improvements – the pavilions, the play area and the skate park.
- The aim of the park plan is to coordinate all improvements and provide a cohesive design through communication and engagement with the community.



Community Engagement

In July 2018 you said you wanted.....

- Wildflower areas
- Increased opportunities for wildlife
- More bins
- Better paths
- Improved entrance and pedestrian access
- Additional planting to protect against exposed feeling of site
- Upgrade to the skate park and playground
- Path for scooters
- Water fountain
- Improved connections
- Opportunities for night sky observation
- Low level lighting
- More benches
- Cycle stands
- Features such as interpretation boards, art/play
- Keep as much open green space as possible



Improvements to Date

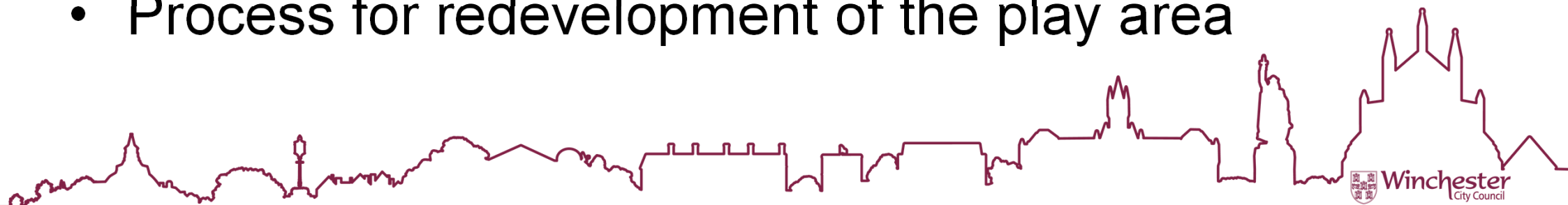
- The Girls Football League has transferred to KGV from the Garrison Ground. In order to achieve this, improvements were made to the grass pitches, parking and access.
- A footpath has been installed linking KGV to the Garrison Ground.
- A height barrier has been installed at the entrance to prevent unauthorised access to the site.
- Repairs have been made to the entrance gates.
- Improvements have been made to the access road including new dragons teeth, repairs to the road surface and speed bump, installation of a mirror and remarking and widening of the pedestrian route into the site.
- New safety signage has been installed at the entrance
- Dog fouling survey undertaken



Play Area Refurbishment



- The play area is due for complete refurbishment in 2021/22
- Needs to complement the new play area at Gordon Avenue
- All existing play equipment will be removed.
- Multi-use court will remain.
- Consultation to find out what local residents would like to see at this park
- Process for redevelopment of the play area



New Skate Park

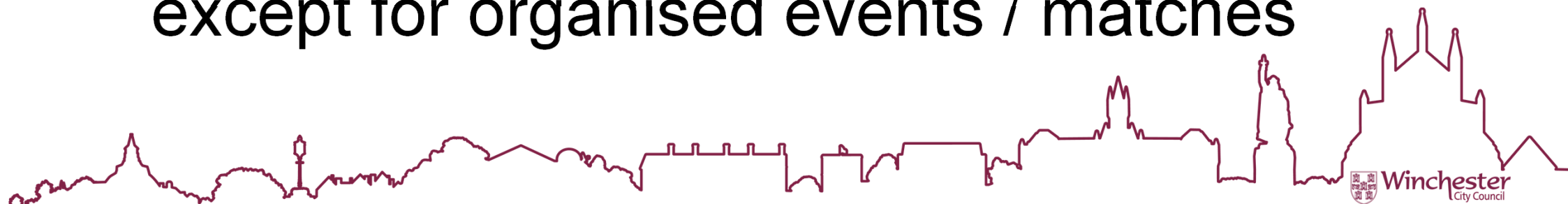


- The skate park is due for refurbishment in 2021/22
- Replace the existing metal ramps with a bespoke spray concrete skate park
- Appoint a designer to work with the young people to create their own unique park
- New design for the park will evolve from design group discussions
- Discussions will include park etiquette to ensure a community vibe



Sports pitches and site access

- Facilities to support play in higher football leagues
- Barrier around one pitch and dugouts
- Increased maintenance to cricket pitches
- Existing on site parking provision will be retained
- Vehicle gate will continue to be locked except for organised events / matches



Protection of the Site



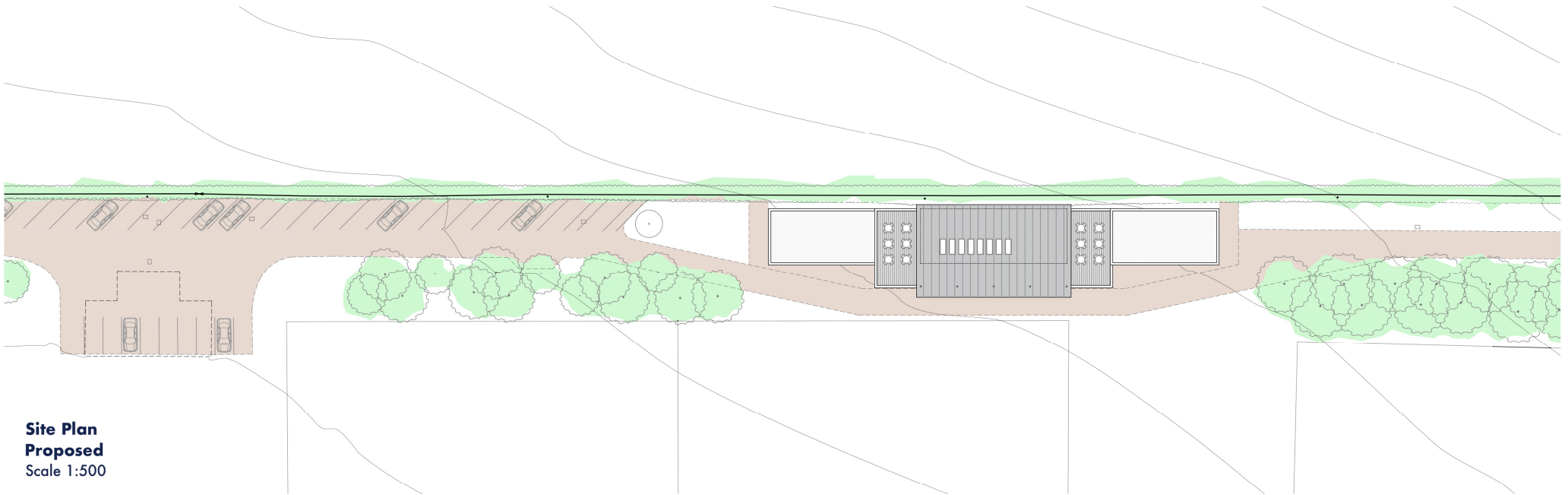
- KGV is protected by Fields in Trust
- Fields in Trust is an independent charity with over 90 years experience protecting parks and green spaces
- Fields in Trust champions and supports our parks and green spaces protecting them for people to enjoy in perpetuity
- Land is protected by a Deed of Dedication which is a legally binding document



New Pavilion

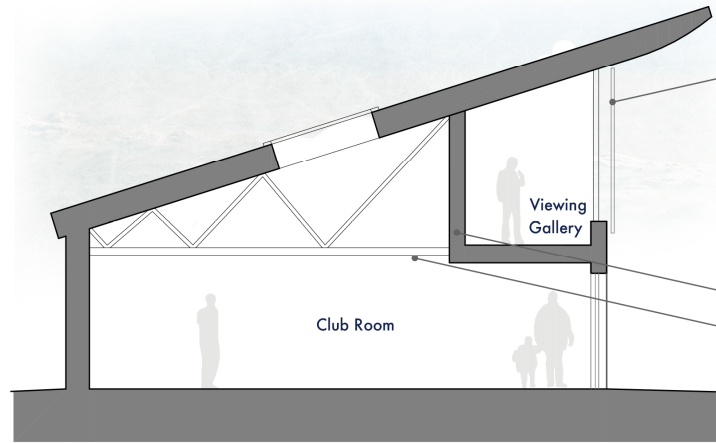


**Front Elevation
Proposed**
Scale 1:500



**Site Plan
Proposed**
Scale 1:500



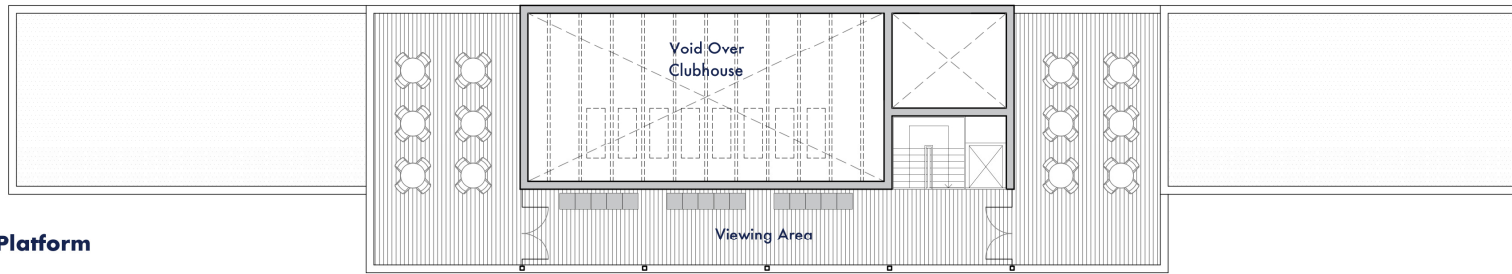


Enclosed viewing balcony with a polycarbonate or glass weather screen. Alternatively this space can also be left open.

Primary timber truss concealed within the wall
To provide aesthetic interest roof trusses revealed and opened up into the club room with rooflights overhead.

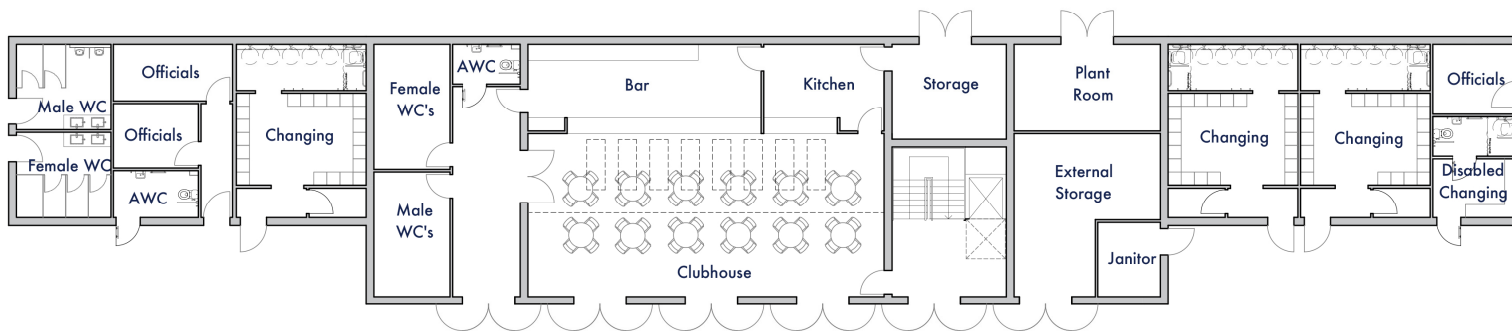
Central Unit Section

Scale 1:100



Mezzanine Viewing Platform

Scale 1:200



Ground Floor

Scale 1:200

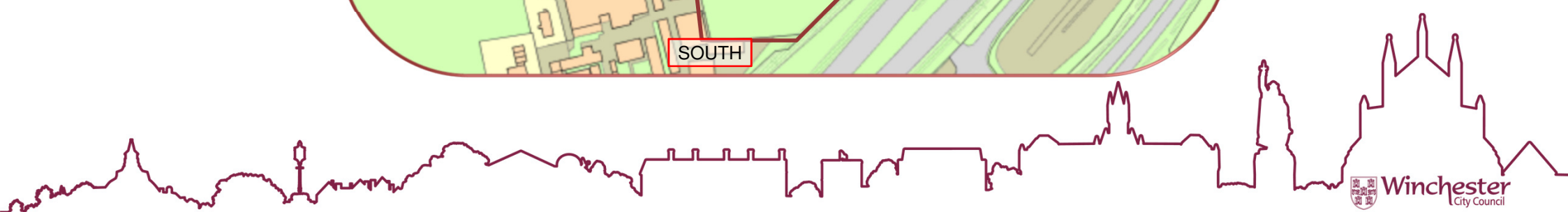
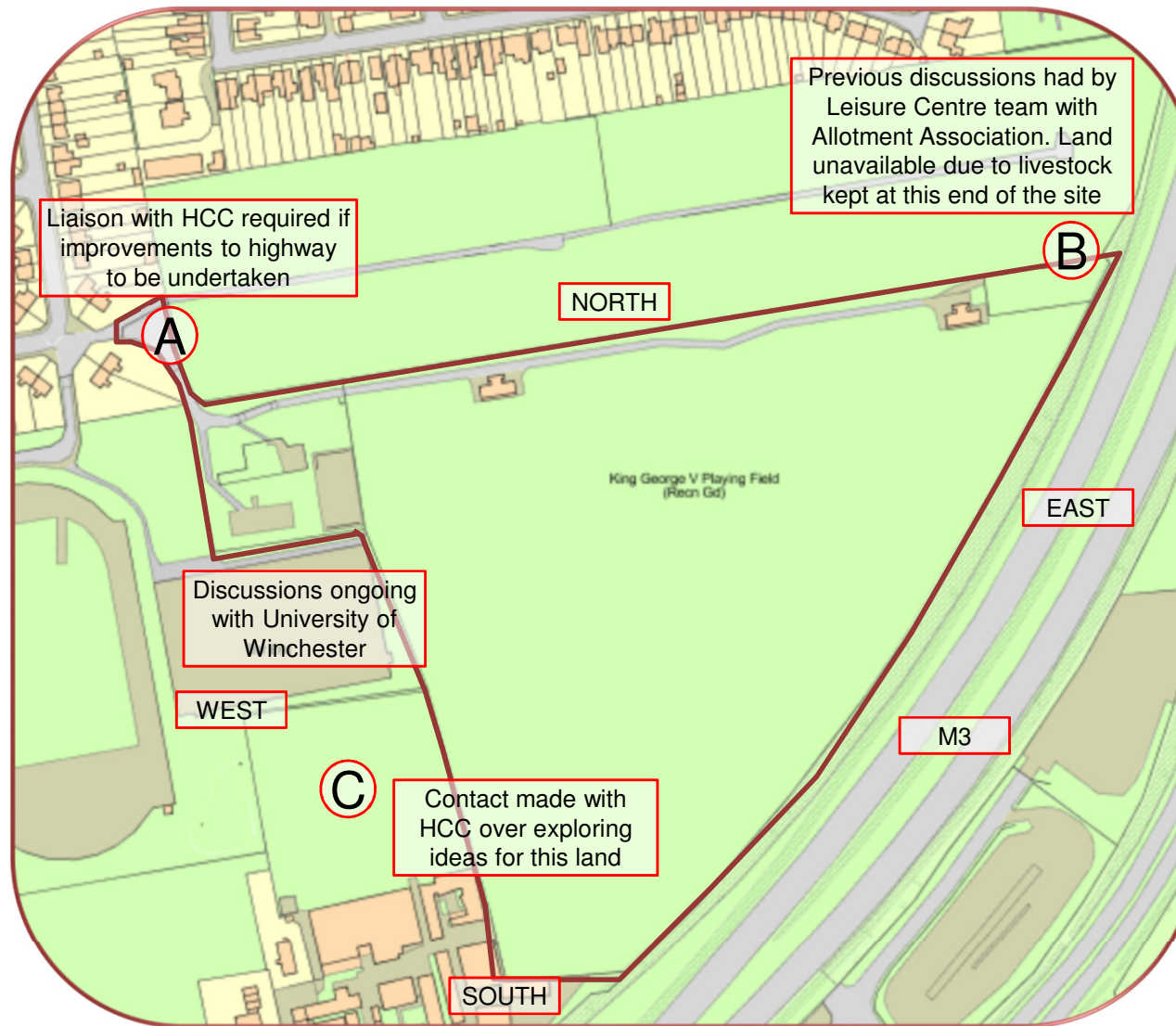


New Pavilion

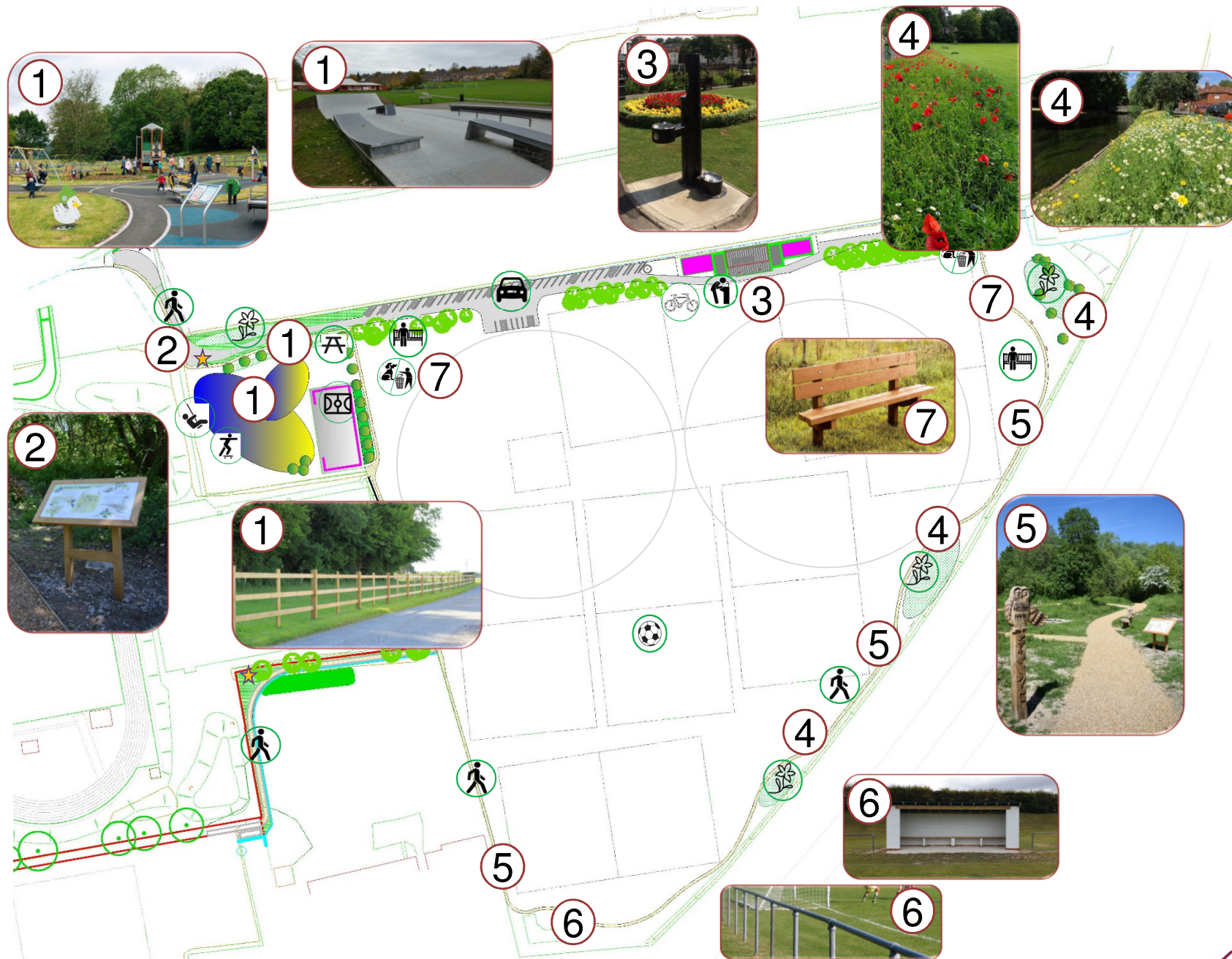
- Construction costs in the region of £1.2-£1.4m
- Subject to public consultation and planning, completion anticipated in Spring 2022
- Next steps.....
 - Appoint an architect to prepare a planning submission
 - Public consultation in February 2021



Surrounding Land Ownership



Potential Environmental Improvements



Access

- Litter/Dog bins
- Footpath/pedestrian access
- Car parking
- Cycle parking

Planting

- Wildflower/Biodiversity areas
- Proposed Trees

Pavilion

- Drinking fountain

Activities

- Play area, skate park and MUGA
- Playing fields
- Benches/Picnic tables

Features & signage

- Entrance sign/Noticeboard, interpretation and play/art

Community Consultation

- The survey will be available on our website at www.winchester.gov.uk/KGV from tomorrow along with a recording of tonight's presentation
- Deadline for response is **5th March 2021**
- It will require you to enter your personal details
- Encourage responses from all age groups



Next Steps

- The results will be analysed and published on our website at www.winchester.gov.uk/kgv
- Work will progress on the pavilion, play area and skate park. Updates and details of further consultations will be published on the website.
- A work programme will be developed for the park plan with funding requirements and priorities.
- The Informal Members Group will continue to meet facilitating and monitoring works at the site.



Thank you joining us this evening

