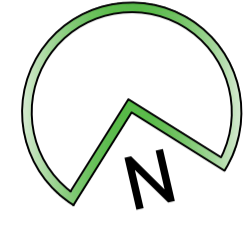


# WINCHESTER CITY COUNCIL

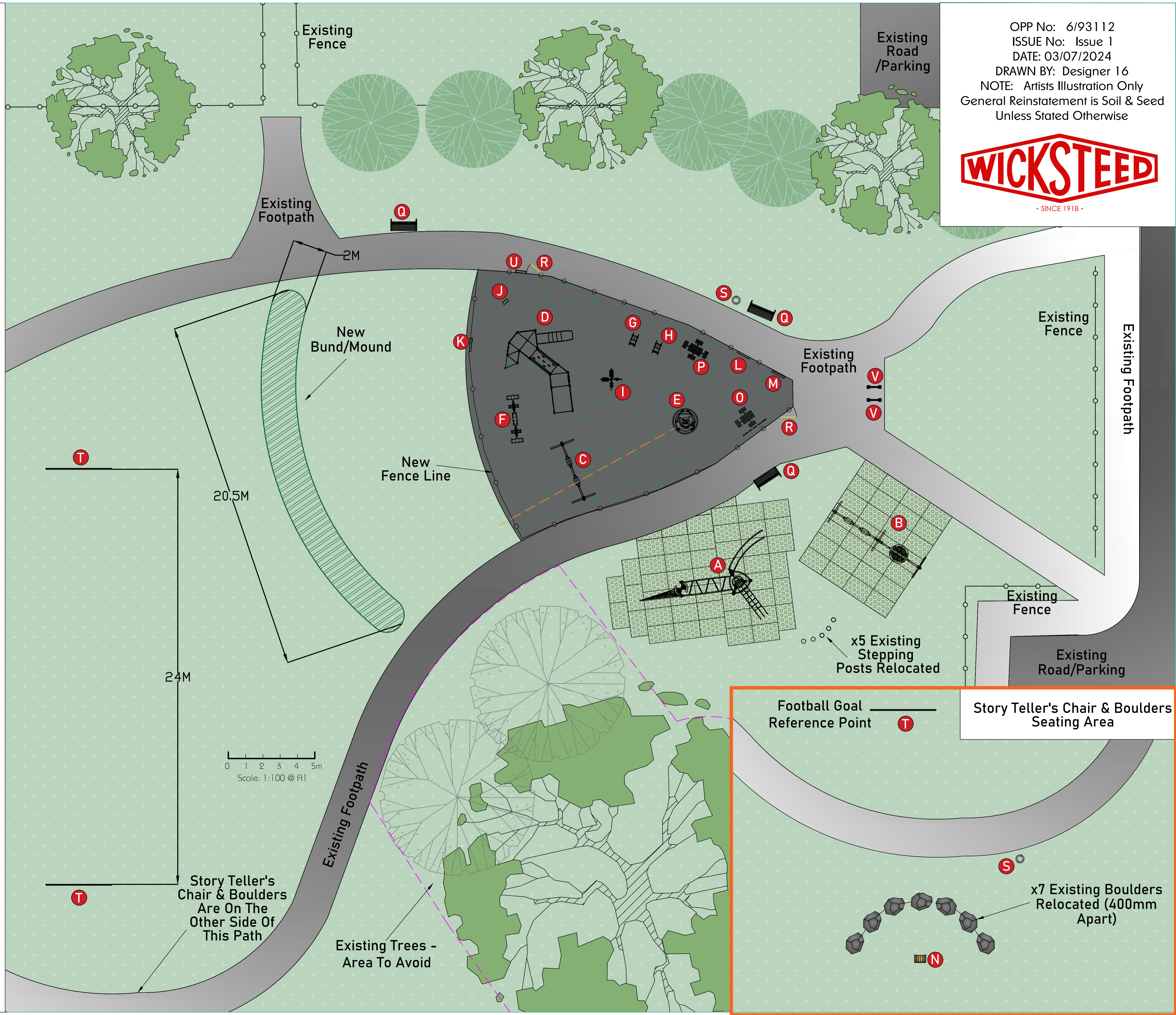
## TALAVERA PLAY AREA



### KEY

- A. Adrenaline Range - Flow: 50Mats @2500mm FFH & Base
- B. Viking Swing - x1 Basket, X1 Flat & x1 Inclusive Seats: 28Mats @1480mm FFH & Base
- C. Viking Swing - x1 Cradle & x1 Tango Seats: 21.55QM @1480mm FFH & Base
- D. Quintessential Range - Rockall With Ramp: 245QM @1000mm FFH, 105QM @500mm FFH & Base
- E. Unity Spinner: 225QM @1000mm FFH & Base (12LM Drainage Pipe)
- F. Sun 45aw: 135QM @1000mm FFH & Base
- G. Inclusive Hedgehog Springy: 7.55QM @600mm FFH & Base
- H. Freddie Frog Springy: 55QM @600mm FFH & Base
- I. Butterfly Game Station
- J. Sensory Totem
- K. Minibeast Sensory Panel
- L. Communication Board
- M. Rock, Paper, Scissors Panel
- N. Story Tellers Chair
- O. 3 Seat Windsor Picnic Table
- P. 4 Seat Windsor Picnic Table
- Q. Keyston Seats x3
- R. x2 Gates
- S. x2 Bins
- T. Five-A-Side Football Goals x2
- U. Playground sign 300mmx400mm
- V. Cycle Hoop x2

- SURFACING:**
- Total Area: 1905QM, 16.5LM Feather, 39LM Chasecut
  - 80:20 Green Fleck Wet Pour Infill: 875QM
  - Baseworks Infill: 855QM



OPP No: 6/93112  
 ISSUE No: Issue 1  
 DATE: 03/07/2024  
 DRAWN BY: Designer 16  
 NOTE: Artists Illustration Only  
 General Reinstatement is Soil & Seed  
 Unless Stated Otherwise



**Story Teller's Chair & Boulders Seating Area**

Football Goal Reference Point

x7 Existing Boulders Relocated (400mm Apart)

Story Teller's Chair & Boulders Are On The Other Side Of This Path

Existing Trees - Area To Avoid

x5 Existing Stepping Posts Relocated

0 1 2 3 4 5m  
 Scale: 1:100 @ A1