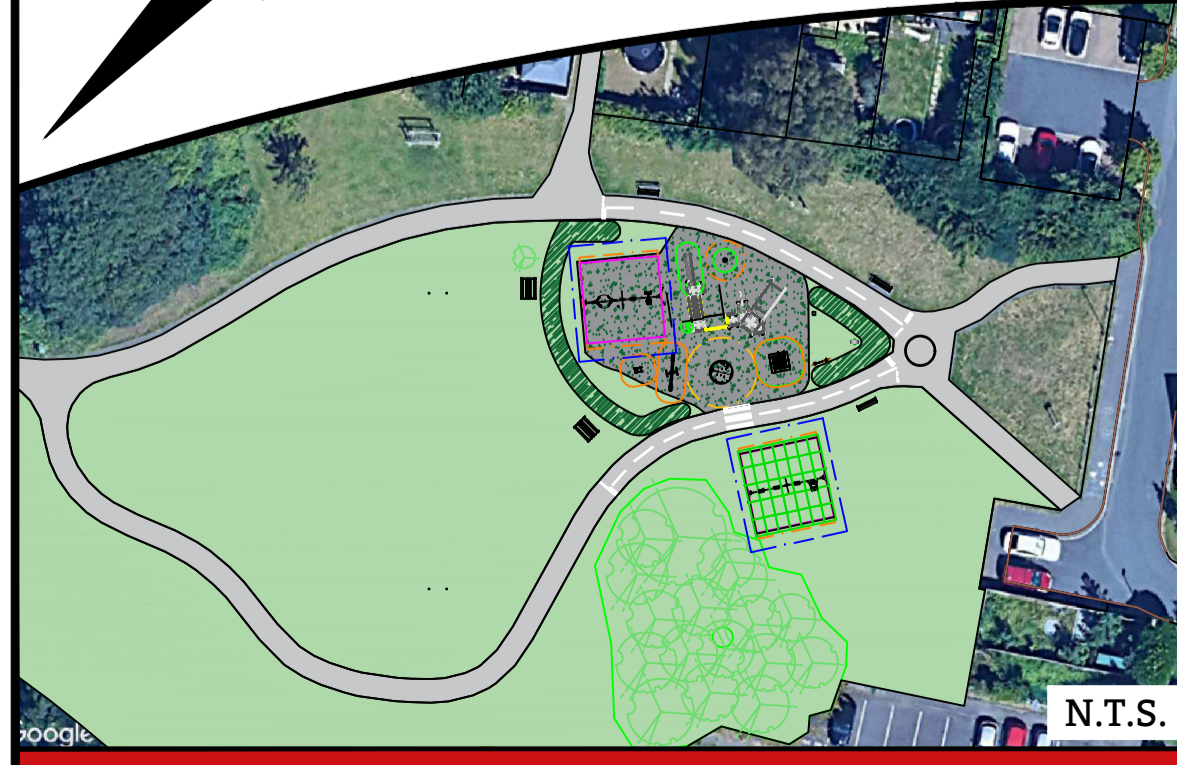
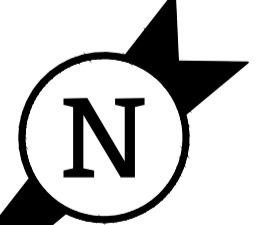


- KEY**
- Falling Space Zone (EN1176)
  - Free Space Zone (EN1176)
  - Clearance Zone (EN1176)
  - Movement Space (EN16630)
  - Training Space (EN16630)

Key	Description	Surfacing
1	Spinmee Inclusive	Wetpour
2	Small Square Trampoline	
3	Omega swing with Tango, Kiddy and Bravo Seats	Grassmat
4	Omega swing with Flats and Mirage	Wetpour
5	Anky Springer	
6	Pirouette Spinner	
7	Vippy Seesaw	
8	Road Tarmac Graphics	Tarmac
9	Goal End Posts	Grass
10	Essentials Seat	N/A
11	Essentials Picnic Table	Wetpour
12	No Dog Panels	N/A
13	SP74XX	Wetpour
14	Eco-Rain Wheel	Grass
15	Sensory Totem	
16	Minibeast Sensory Panel	
17	Hammock	Grass
18	Relocated Rocks	
19	Mounding	



**GENERAL NOTES**

If not indicated on this plan, north point must be confirmed prior to installation to ensure that slides do not face due south.

No allowance has been made for soft landscaping (trees, mounds, planting, turf or general reinstatement). These should be carried out by others.

Exact positions & orientation of new items may be subject to a final site survey and setting out plan.

Any inconsistencies on site should be verified with HAGS before commencement of work.

HAGS recommend that existing trees are risk-assessed by the client to ensure the integrity of accessible branches, that overhanging limbs do not conflict with new play equipment or vehicle access and that the canopy will not produce excessive leaf drop which could cause a hazard within the play area.

This design layout conforms to the relevant EN Safety Standard.

**GRASS & GRASS MAT SURFACING**

Where equipment is installed directly into grass and the free height of fall is between 0.6m and 1.5m it is the responsibility of the playground operator to ensure that the grass sward is maintained in good order.

Where equipment is installed with grass mat surfacing it is the responsibility of the playground operator to ensure that the grass sward is maintained in good order.

When laid directly onto existing grass this surface will follow the natural contours of the ground unless HAGS have specifically detailed additional preparation/levelling/or turf works.

**CUSTOMER**  
Winchester CC

**PROJECT**  
Talavera Road

**TITLE**  
Play Area Proposal

**HAGS**<sup>®</sup>

T: 0845 260 1655 E: sales@hags.co.uk W: www.hags.co.uk

DATE: 03/07/24 SCALE: 1:100 @ A1  
DRAWN BY: C.C. CHECKED BY: --

DRAWING NUMBER: Q-32628-H3X6-C REVISION: 0

© HAGS 2024 SHEET 1 OF 1

