

CHILTERN COURT - ALRESFORD ESTATE IMPROVEMENTS JUNE 2020

Introduction

As part of our Estate Improvement Programme, Winchester City Council is proposing to create additional parking and improve the refuse disposal provision, at Chiltern Court.

Aims

- Revise the layout of the site/existing parking areas
- Resurface as necessary
- Create additional parking bays
- Remove the existing washing area
- Provide a communal bin store

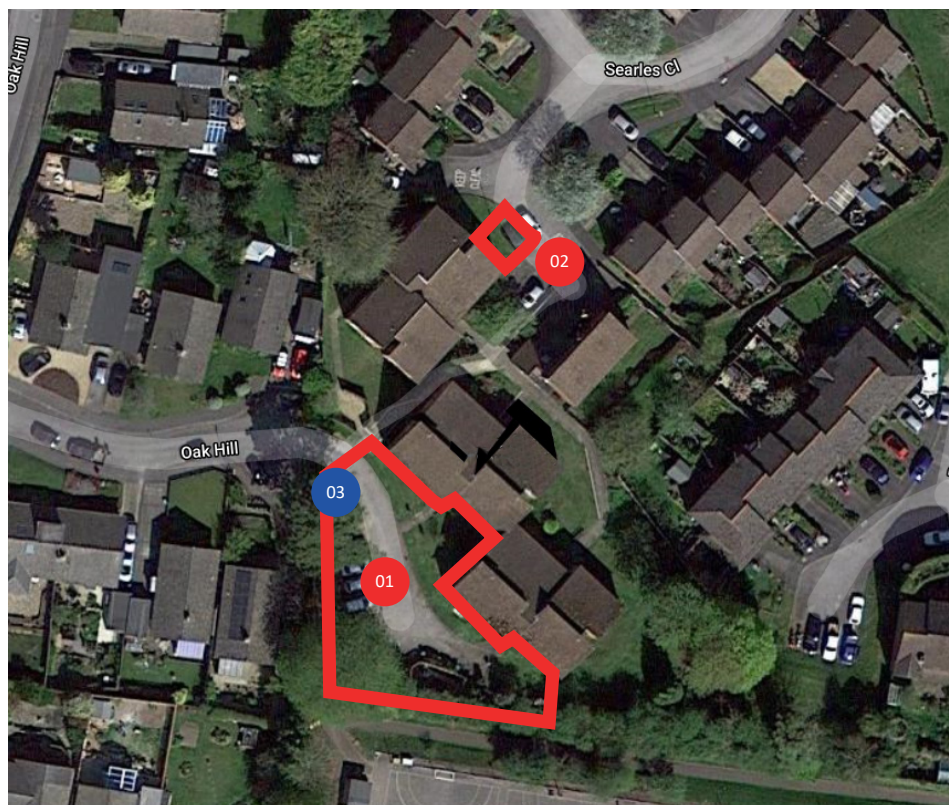
Why are the improvements needed?

Although there is some parking provision on site, it is no longer sufficient for the number of vehicles owned and used by residents. The access road is narrow and is often obstructed with vehicles. The surface to the existing car park is uneven and would benefit from resurfacing.

At present there is space for 6 vehicles in the car park area off Oak Hill; our proposal is to create an additional 12 bays in this area. There is space for 2 vehicles at the front of Chiltern Court, off Searles Close; we propose creating an additional 2 bays here.

The existing washing area is no longer used for this purpose, and is generally used as a bin store. As per the proposal, this area is identified to be replaced with parking bays, so we need to find an alternative location to store bins more appropriately.

Our intention is to remove some of the bins from site and replace with larger capacity communal bins, which would be stored in a designated bin store near the entrance to the site.



LEGEND

- 01 Oak Hill car park - 18 proposed spaces
- 02 Searles Close car park - 2 proposed spaces
- 03 Additional bin store location

Areas outlined in red for car park development

CHILTERN COURT - ALRESFORD ESTATE IMPROVEMENTS JUNE 2020



01 Oak Hill car park - 18 proposed spaces

- Remove bin store and washing lines
- Replace with new parking spaces



02 Searles Close car park - 2 proposed spaces

- 2 new parking spaces



03 Additional bin store location

- Location of new bin store

CHILTERN COURT - ALRESFORD ESTATE IMPROVEMENTS JUNE 2020

SITE PLAN - Oak Hill Creating a total of 18 parking spaces



NTS

CHILTERN COURT - ALRESFORD ESTATE IMPROVEMENTS JUNE 2020

3D View - Oak Hill



CHILTERN COURT - ALRESFORD ESTATE IMPROVEMENTS JUNE 2020

3D View - Oak Hill

View of the entrance to Chiltern Court from Oak Hill, with new bin store



View looking back to Oak Hill from Chiltern Court



CHILTERN COURT - ALRESFORD ESTATE IMPROVEMENTS JUNE 2020

SITE PLAN - Searles Close



CHILTERN COURT - ALRESFORD ESTATE IMPROVEMENTS JUNE 2020

3D View - Searles Close 2 additional parking spaces



CHILTERN COURT - ALRESFORD ESTATE IMPROVEMENTS JUNE 2020

3D View - Searles Close

View of new parking spaces from Searles Close



View of new parking spaces from Searles Close



CHILTERN COURT - ALRESFORD ESTATE IMPROVEMENTS JUNE 2020

MATERIALS

Parking Bays

Parking bays to be constructed from from a Golpla System which will be filled with gravel. This will allow water to drain through and would not have a negative impact on the adjacent trees.



Grey gravel



Yellow gravel

Road Access

The road leading to the parking bays will in tarmac



Bin Store

Timber hit and miss fencing to match existing bin store

