

Community Space Residents Plan

Created by residents from:

Westfield Road: Castle Rise: North Road: Somerville Road



Together we want to future proof the area as an Open Green Space or Village Green.

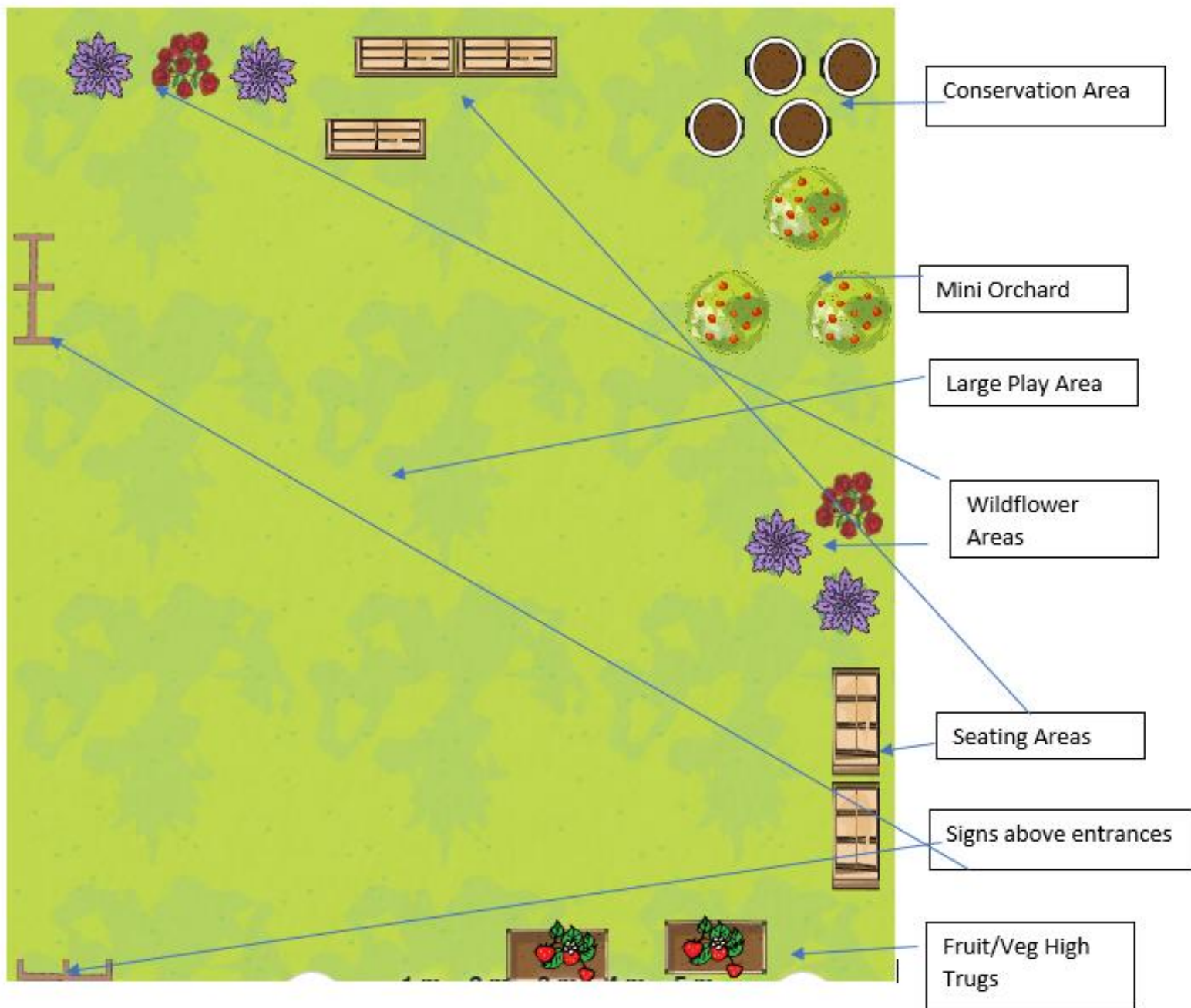


A space that has important amenity, biodiversity, heritage and recreational value.



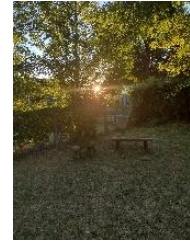
An easy to maintain space that can be accessed and enjoyed by everyone.

Plan of the community space



This drawing is based on ideas brought by over 20 adults and children from the surrounding neighbourhood in 2022.

Short Term Plan



- ◆ Create a large open space for playing (with maintained grass) area by WCC. This could also be used as a picnic area.

- ◆ Seating area for all ages



- ◆ Wildflower Sections to encourage butterflies and pollinators

- ◆ Quiet habitat for wildlife



- ◆ Mini Orchard (3 fruit trees) with Tree Plaques to commemorate the Queen and new King

- ◆ Arch Signs for both access areas



Long Term plan

- ◆ Mini carved animals as a trail/maze for kids



- ◆ Bench Plaques

- ◆ Container to collect rainwater



- ◆ Planters/Veg Truggs (To encourage residents to grow their own veg)

Wildlife Resources Ideas

Additional hedgerow plants to attract birds

Bat Boxes

Hedgehog Habitats

Slow Worm Habitat

Bug Houses

Several of the children are members of the local Scouts & Cubs and could make several of these with their Troops. We would also like to be able to do a workshop on the field for the resident's to make environmentally friendly habitats together.



Wildlife & Plants Spotted by Residents this year

Red Kites

Bats

Hedgehogs

Mice

Starlings

Butterflies

Fungi

Wildflowers

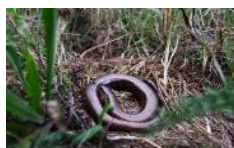


Decline in Wildlife over past 5 years

Slow worms

Foxes

Garden Birds & Owls



Other Organisations & Charities

We are reaching out the following organisations and charities for advice with regards to Conservation and wider community inclusion...



Kings Worthy
Community Shed



Top Field
Community Group
Kings Worthy



Parish Council



Social Gatherings & Connections

We have begun to organise social gatherings on the green. During the Summer residents from all four roads joined in for a bbq (cooked on a resident's patio) and the children are often out playing sports together. We have a Christmas Social planned too. We also have a new Whatsapp group to keep in touch, share ideas and support each other.



get together



We look forward to many more organised and informal gatherings, and want to encourage the next generation to look after this precious land in our Community.

